



home garden

spring into
summer

three seasons of perennial flowers
regional gardening **hollyhocks** plant doctor
backyard gatherings urban oasis





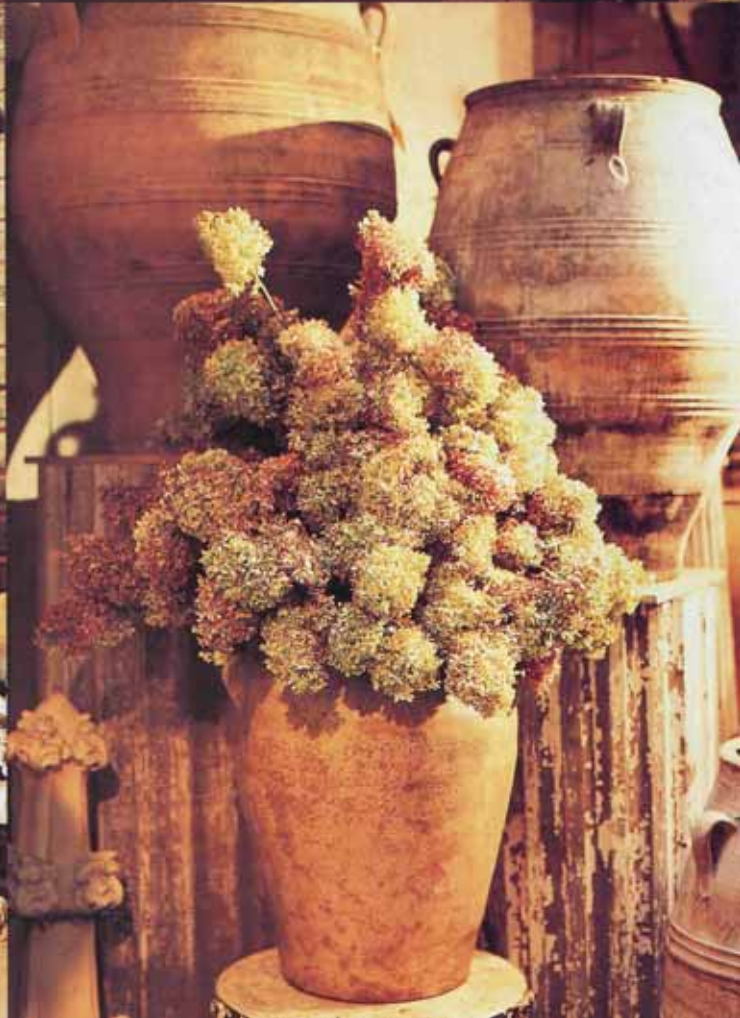
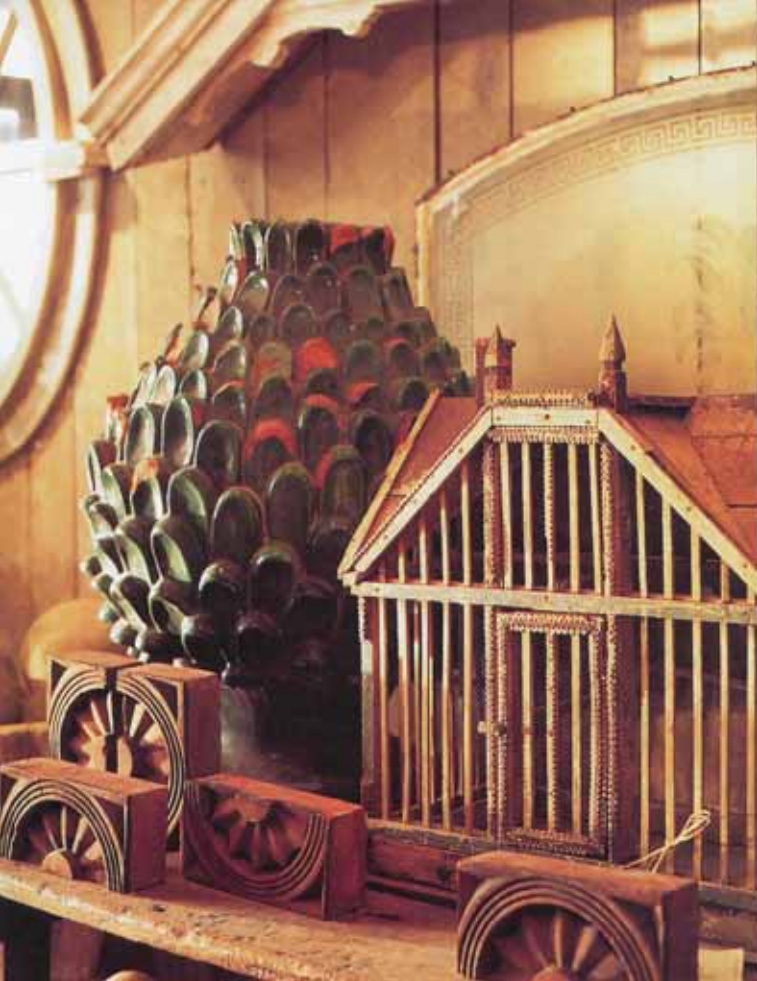
TREILLAGE

VISITING BUNNY WILLIAMS' EXTRAORDINARY GARDEN SHOP ON MANHATTAN'S UPPER EAST SIDE IS A BIT LIKE GOING ON AN ARCHAEOLOGICAL DIG, ONLY YOU DON'T get dirty and you take a cab home. Even better, it offers gardeners the opportunity to dress the outdoors in great interior style. Bunny ranks gardening a passion second only to interior design, the profession that has earned her national acclaim. These days, the division between her two loves is all but moot: Treillage, the shop she opened with partner John Rosselli nearly four years ago, displays an aesthetic that relates directly to Bunny's interior work. And, it all began by happenstance.

"One spring, I was wandering around the Chelsea Flower Show with John, looking at all the flowers and garden tools," Bunny recalls. "I said it was a shame no one had opened a great garden shop in New York—I wanted a place to find wattle fencing and all those wonderful old tools and accessories that go with gardening. John's response: 'We should open a shop together.'"

A respected antiques dealer (John Rosselli, Ltd., and John Rosselli, International), he knew just the location.

TEXT BY CANDACE ORD MANROE PHOTOGRAPHS BY BILL HOLT
PRODUCED BY BONNIE MAHARAM





It was an old blacksmith shop that Bunny called "the black hole of Calcutta." Still littered with equipment from its more recent use as a welding business, it was dark and dismal. "Absolutely awful," Bunny recalls. "But John said to me, 'Don't you love the doors?'"

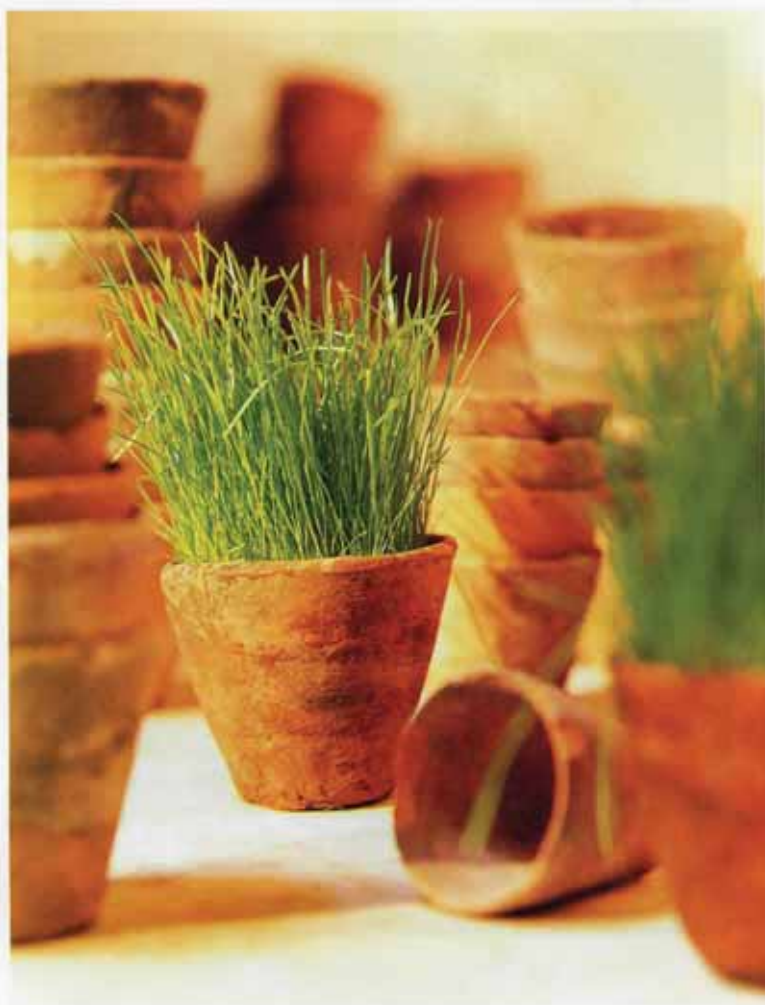
She did, and agreed to the location despite her initial misgivings. After clearing out the mess and ripping down the moldering tin ceiling, the possibilities came to light: The higher ceiling was ideal for sky-

lights, which would allow the antique patinas and organic qualities of the shop's diverse assortment of offerings to be fully appreciated. And Bunny knew exactly what she wanted those offerings to be.

"Nothing standardized, like a suite of outdoor furniture. It's much more charming to have an old stone table with new metal chairs. I wanted a collected look, like I would create in an interior," she says.

The partners' idea was to offer antiques and one-of-

OPPOSITE: A mellow patina characterizes Treillage's array of garden items, from (clockwise from the top left) chip-carved tramp art birdhouses, stone urns, hand-thrown pots, and carved wooden sculptures to unusual carved fountains (see preceding pages). **ABOVE:** Owners Bunny Williams and John Rosselli bring a unified eye for the eclectic to their shop, located on Manhattan's Upper East Side.



a-kind accessories, along with copies of pieces they would have made just for the shop. "Because John and I both are eclectic buyers, he broadened our focus to include garden items that can be used inside or out."

The look is distinctive: casual, old, collected. "We didn't want any mahogany furniture. Everything here is somewhat country, with a rich patina and a textural, organic feeling," Bunny says.

ABOVE: Even the humblest items find new life at Treillage. These tiny, English pots called *longtoms* were originally created during the Victorian Era for nurseries interested in starting long-rooted seedlings. Today, the graceful yet rustic pots are equally at home indoors, planted with grass, and used as a tabletop accent. See "Seasonal Settings" on page 22 for information about growing grass in pots.

Price, too, is a consideration in everything that's selected for the shop. "People want the feeling of antiques, but they aren't willing to spend a fortune on high-end, pedigree furniture. Our things offer the same look with a fanciful quality, but not the huge price tag. This is the result of understanding that there's a lot more sophistication today in the design world about buying," she explains.

The look at Treillage is distinctive: casual, old, collected.
Pieces exude an organic feeling, a timeless patina.



New items like these tiny majolica teapots in vegetable motifs are always cropping up at Treillage. This trio sits on a polished wooden box that's inlaid with a variety of antique plant markers.



At any given time, the shop includes an array of antique urns and garden statues, hand-thrown English pots, and quality tools—"all the accoutrements that go with gardening," says Bunny.

Furniture, especially tables and chairs, that can go either indoors or out is always on hand. "We offer Sutherland's line of teak furniture, which has more refined lines than what's been available before," Bunny notes. "When we find an old chair that's wonderful but that there's only one of, we may have it reproduced in a limited number. Then, the reproductions can be put together with an antique table."

The inventory of antique furnishings varies from day to day, which means that visits to the shop always hold something new. Just returned from a trip to India, Bunny explains that Treillage's merchandise is acquired from around the globe.

Gardeners have responded to the shop in spades. "The people who come here discover a treasure trove for their gardens," says Treillage's Claire Lubin. "They are very much amazed at what they find here."

Enthusiasm has been so great since the store opened in November 1991 that Bunny and John have gone bicoastal, offering gardeners on the West Coast an opportunity to outfit their outdoor (and indoor) spaces with quality finds like those in the New York store. This March marked the grand opening of a second Treillage in San Francisco's new Gump's.

At both locations, a single standard dictates what's available for sale: "Only those things that John and I personally love." For the gardener, this means dressings for the outdoors that are as sophisticated, in a rustic sense, as the interiors of Bunny Williams. ■



details, details Treillage, Ltd.,

418 E. 75th St., New York, NY 10021.

Call 212/535-2288; fax 212/517-6589.

Located in a former blacksmith shop, Treillage (French for trellis or latticework) spans some 3,500 square feet. Soaring ceilings and light-saturated atriums lend themselves to an ever-changing display.

THE OWNERS: Interior designer Bunny Williams and antiques dealer John Rosselli.

THE HOURS: Monday—Friday 10 a.m.–6 p.m., and Saturday 11 a.m.–5 p.m. Closed Sunday.

THE GOODS: Antique, limited reproduction, and one-of-a-kind tables and chairs for indoor or outdoor use; hand-thrown English pots; quality garden tools; stone urns and statuary; hand-carved wood sculptures; folk art birdhouses; and other garden-related accessories and furnishings.

DIRECTIONS: On the Upper East Side in the Lenox Hill neighborhood between First and York Avenues, Treillage is off Manhattan's beaten path. Too far away from subway stations for an easy train ride, it requires a trip by cab or car, but customers say the effort is easily worthwhile.

west coast A new Treillage came to San Francisco this spring with the grand opening at Gump's on March 6th. The shop is located within the department store.